



INDEPENDENCE

Oregon's Story Begins Here



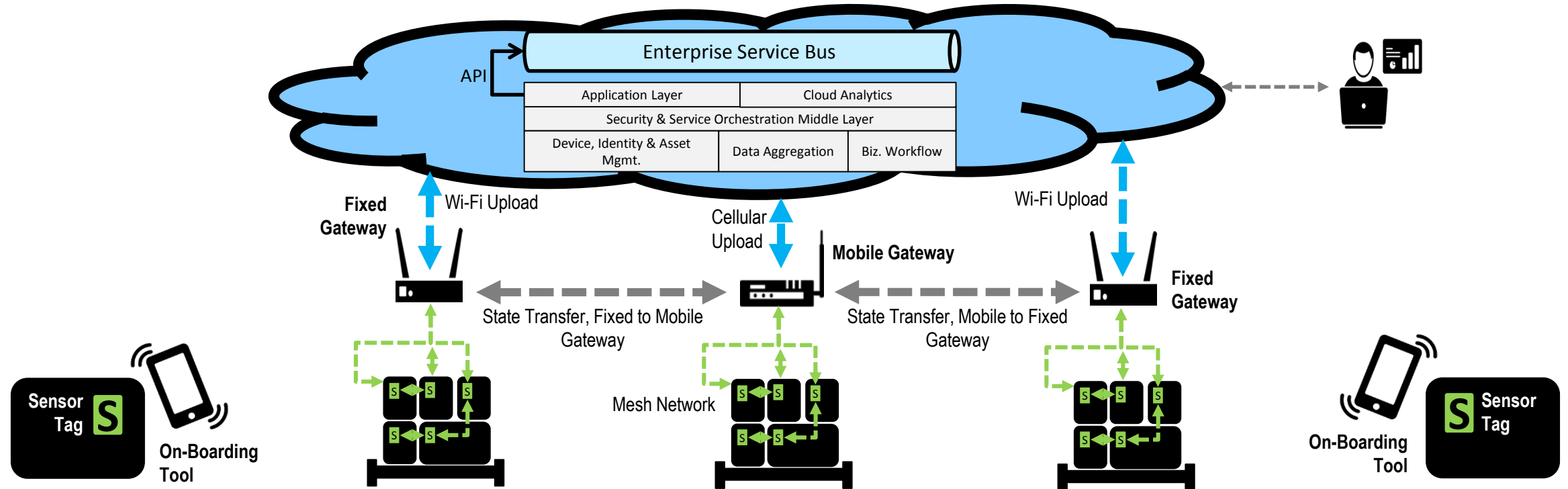
Intel Connected Logistics Platform Tech Jam

June 2018

Laura Rumbel, Consumer Experience Enabling Director, Intel

Shawn Irvine, Economic Development Director, City of Independence

Use case: source to destination tracking



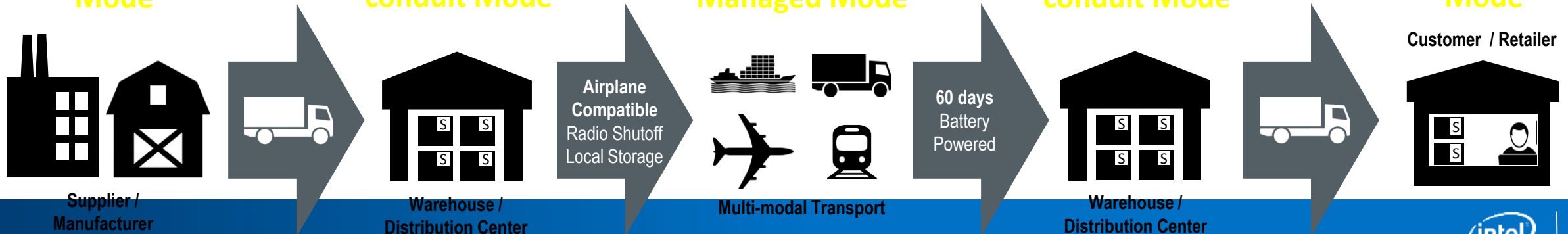
Start Logger Mode

Fixed gateway conduit Mode

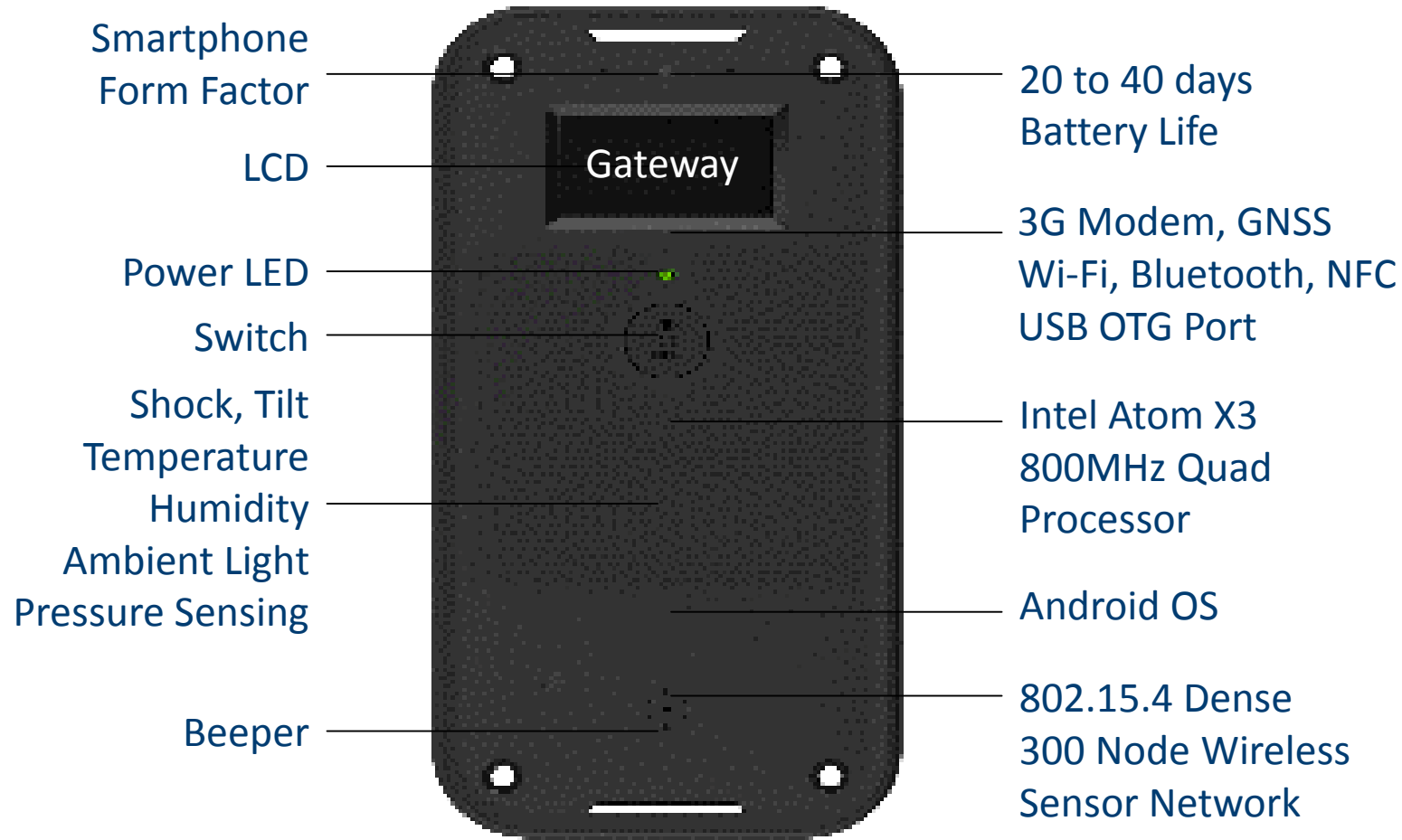
Mobile Gateway Managed Mode

Fixed gateway conduit Mode

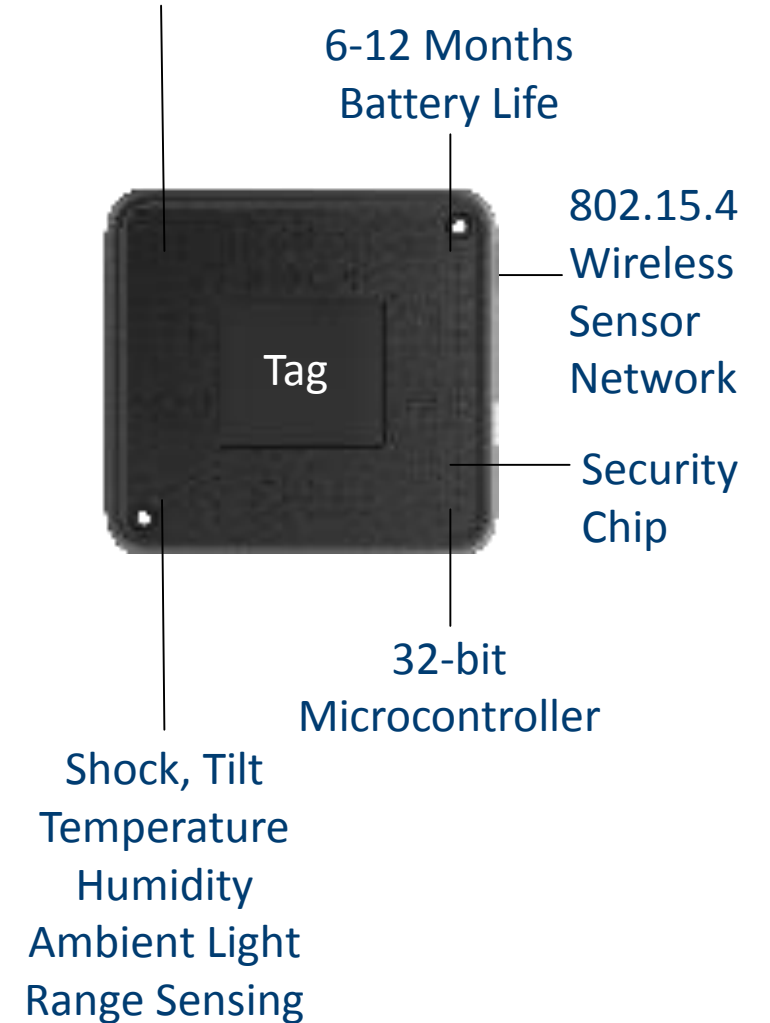
End Logger Mode



ICLP hardware



Credit Card Form Factor



Rogue Fresh Hops Proof of Concept

Research Goals

Demonstrate the ability to:

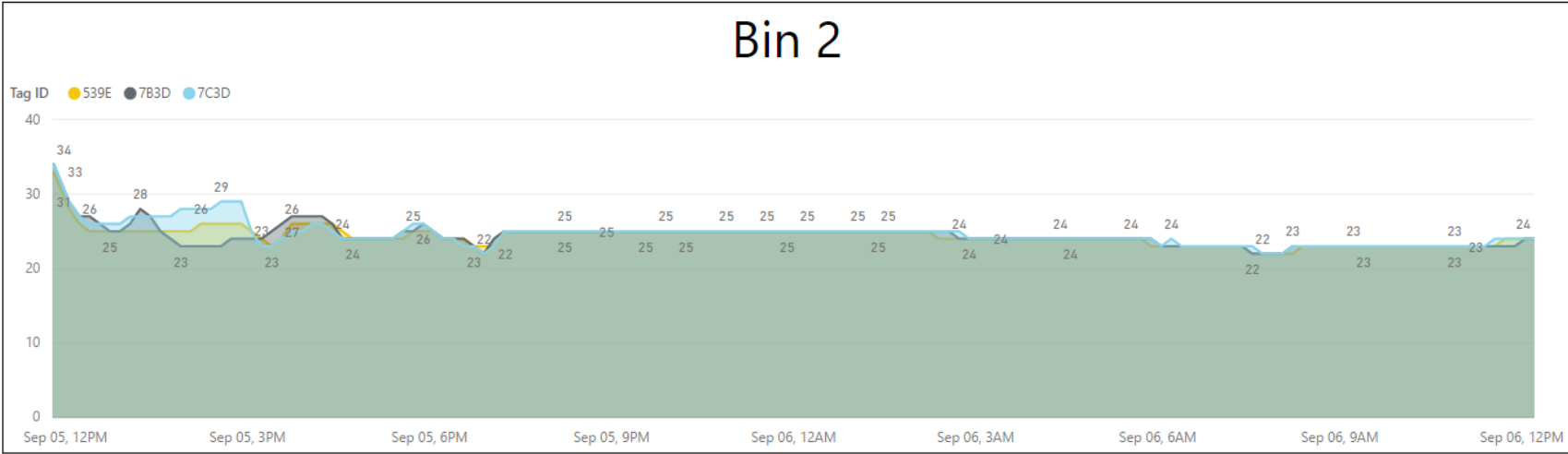
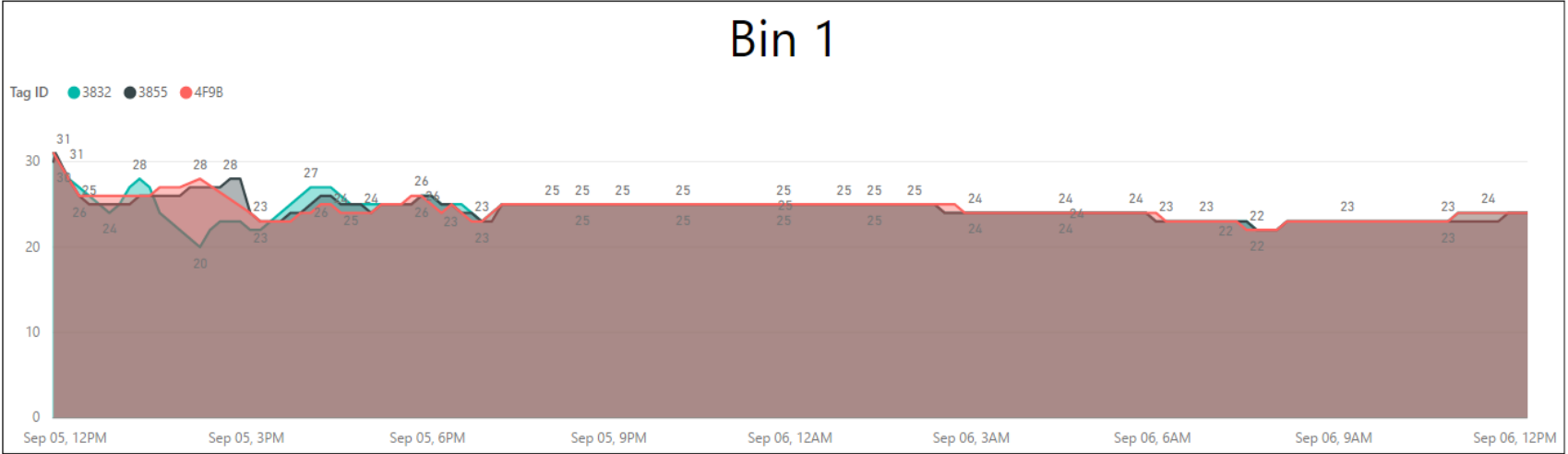
- Collect temperature and humidity data on produce between the farm and the processor
 - Aggregate data for post hoc analysis
 - Supply real time data on website for inspection during transit
- Note whether temperature or humidity rise above or below preset boundaries
- Generate and transmit alerts to advise trucker and receiver that measurements are outside desired bounds
- Track location of produce using GPS
- Aggregate data for post hoc analysis
 - Supply near-real time data on website for inspection during transit
 - Generate and transmit alerts when shipment is within certain distance(s) of receiver

The Hop Journey

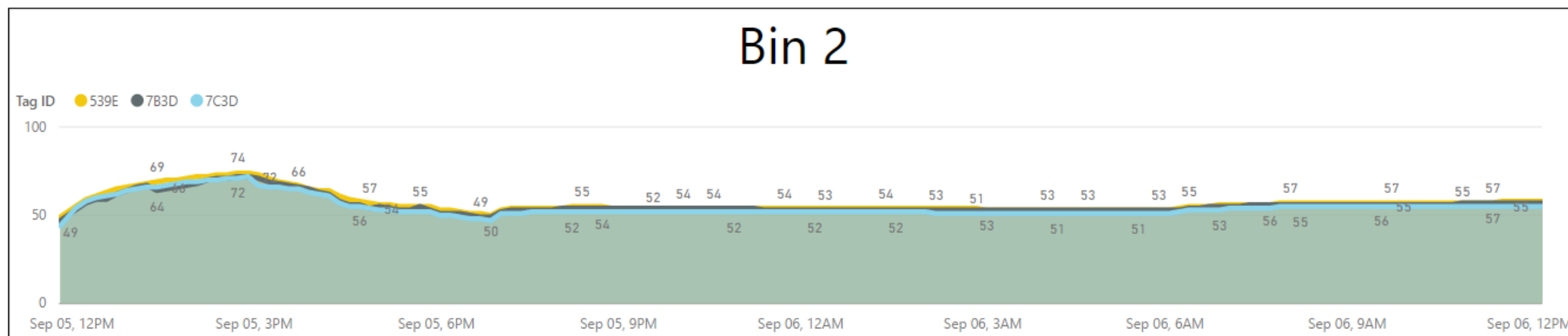
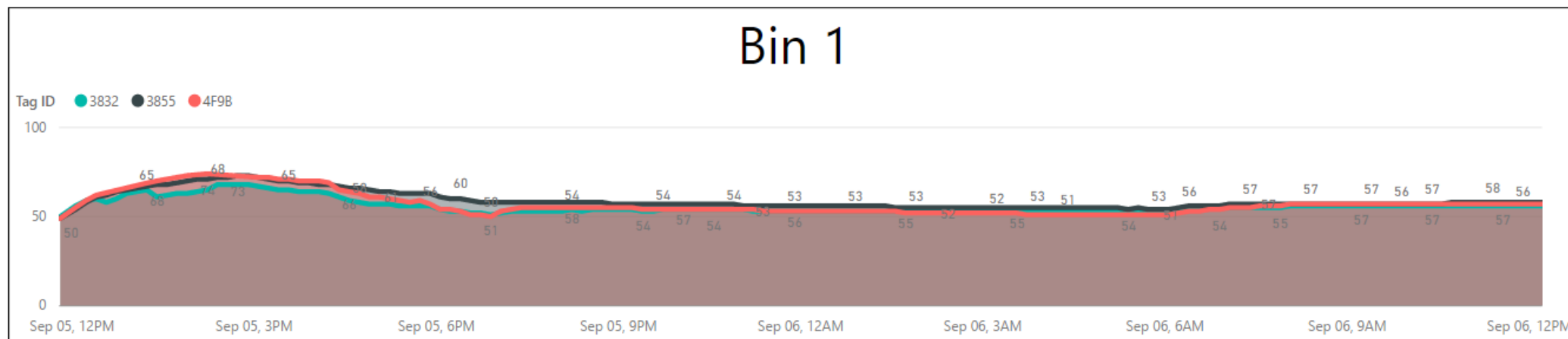
77.5 miles | 2:04 hours



Temperature Report



Humidity Report

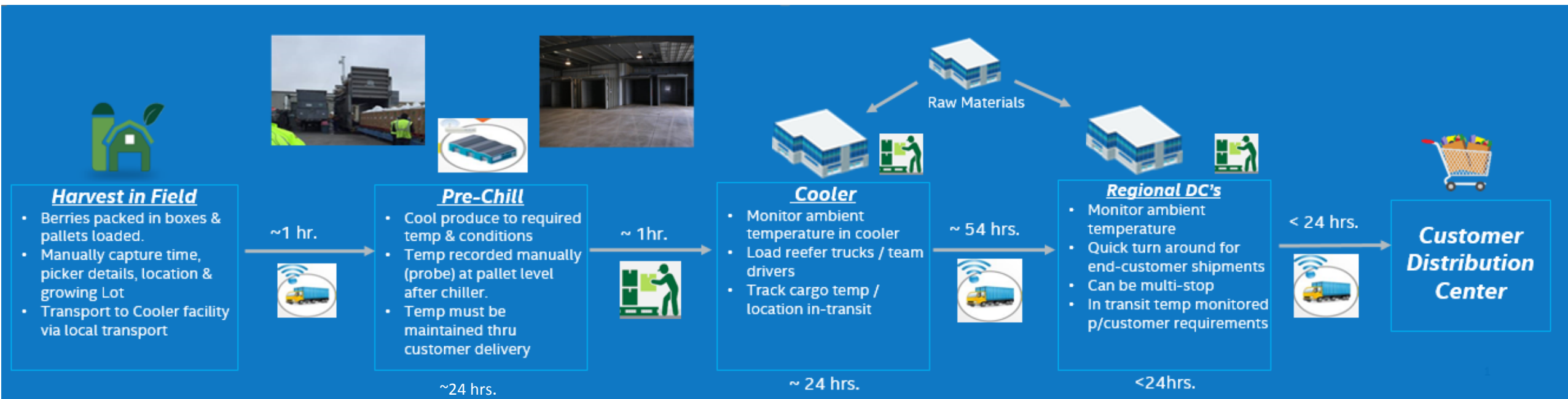


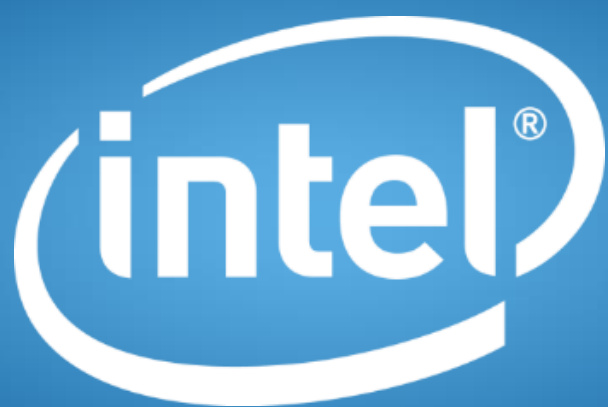
Berry Blockchain Proof of Concept

Berry POC scenarios

- Capture and log GPS origin of organic fruit picked at organic Harvest Site location
- Track the temperature and humidity of the picked fruit in the Harvest Site and identify how long the picked fruit is at Harvest Site awaiting transport
- Track location, temp and humidity of fruit while in transit from Harvest Site to Pre-Chill Site
- Track temp and humidity of fruit while at Pre-Chill Site
- Track location, temp and humidity of fruit while in transit from Pre-Chill Site to Processing Site
- Track location, temp and humidity of fruit while in at Processing Site and moving to Cooling Site
- Track location, temp and humidity of fruit while in transit from Cooling Site to Distribution Center
- Integrate ICLP with the block/ledger for one holistic platform
- Relevant shipment data (TBD) mirrored in ledger for POC stakeholders (PO, COC, POL)
- Automate all sensor data uploaded to ledger, eliminating risk of human error and shifting range of trust to technology platform

POC Goal: “Visibility to all cold chain data from the growing lot to the end customer distribution center shared and exchanged securely using blockchain”





Initial Concept design- Gen 1



Honeywell sensor tags and gateway: re-useable, recyclable components ensure cost-effective deployment on a large scale

Photos

