



Project GRACE

- Towards a Secure Internet -

Dr. KangWei Woo

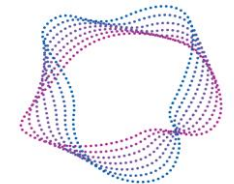
Executive Director, QuantumCIEL

20 June 2018

Team Members

QuantumCIEL

CSA
SINGAPORE



GOVTECH
GOVERNMENT TECHNOLOGY
AGENCY OF SINGAPORE


VIBE Cyber
Trust Nothing. Authenticate Everything.

SECURE-IC
THE SECURITY SCIENCE COMPANY



University
of Glasgow

What Issues Are We Addressing?

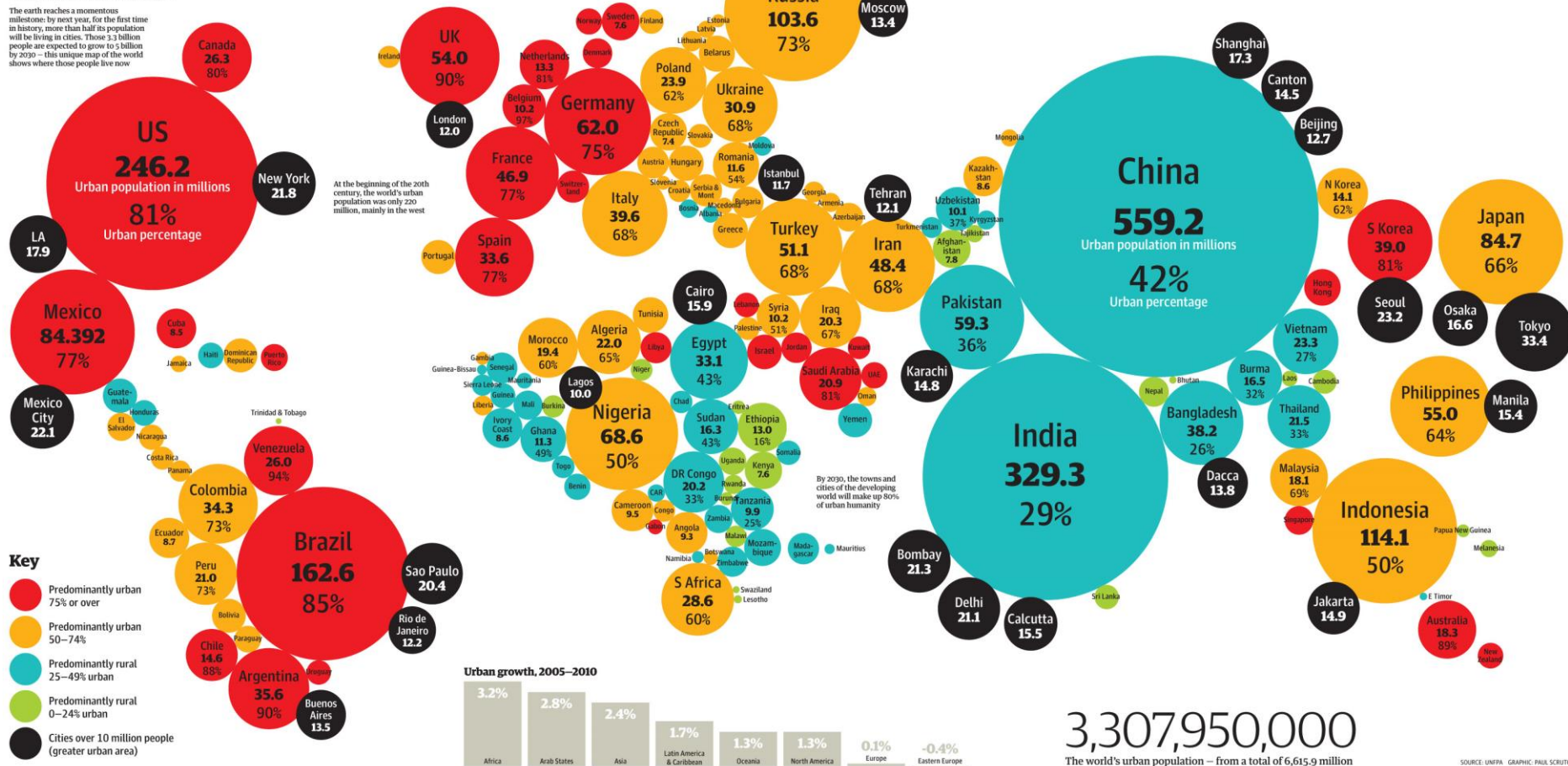
Half the world's population currently lives in cities.

By 2030 80% of the world's population will live in cities.

The new urban world

The earth reaches a momentous milestone: by next year, for the first time in history, more than half its population will be living in cities. Those 3.3 billion people are expected to grow to 5 billion by 2030 – this unique map of the world shows where those people live now.

Source: United Nations Population Fund



3,307,950,000

The world's urban population – from a total of 6,615.9 million

SOURCE: UNFPA, GRAPHIC: PAUL SCRUTTON

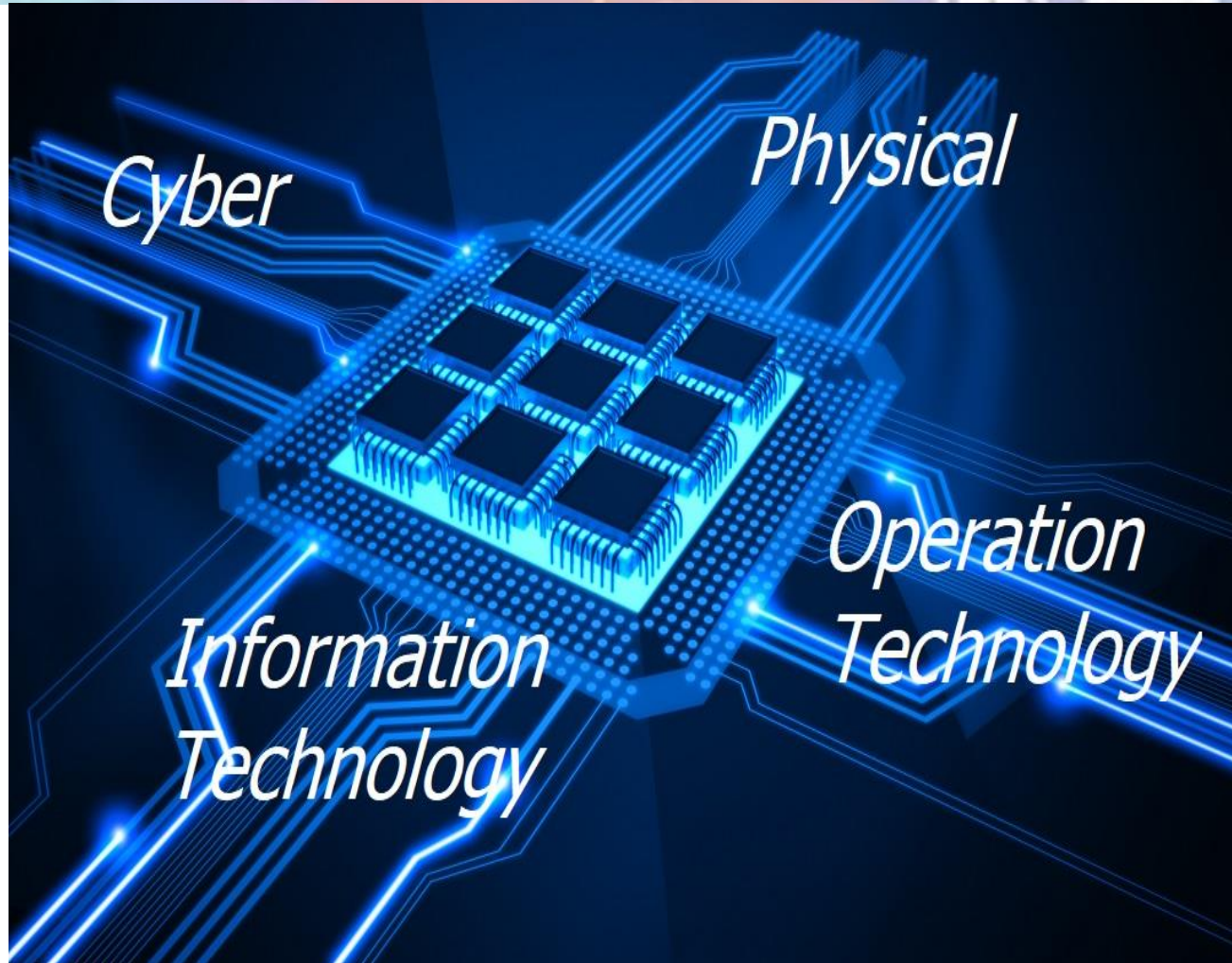
Waseda-IAC International e-Government Ranking

No	Total Rankings	Score
1	Singapore	91.057
2	Denmark	88.739
3	USA	87.117
4	Japan	81.236
5	Estonia	81.198
6	Canada	77.425
7	New Zealand	75.041
8	South Korea	74.828
9	UK	74.214
10	Taiwan	73.224

The Waseda University Institute of e-Government (Prof. Dr. Toshio OBI, Director) has released the results of the 2017 Waseda-IAC International e-Government ranking survey, the 13th annual edition.

Reference: <https://www.waseda.jp/top/en-news/53182>

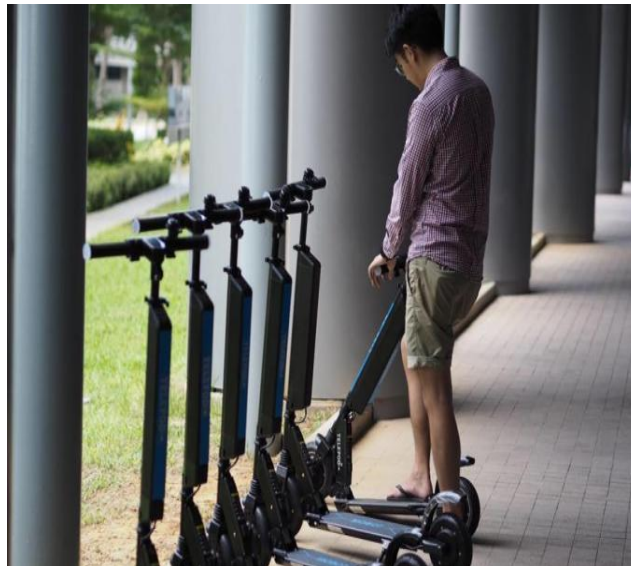
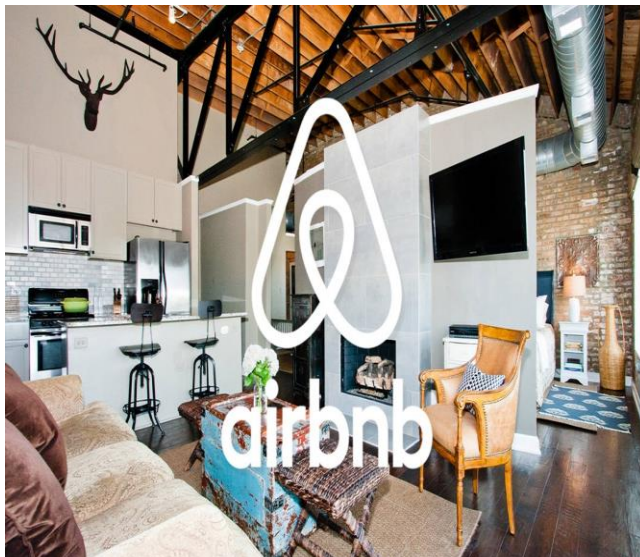
At the Digital Crossroads...



Not Sharing?



New Sharing Economy



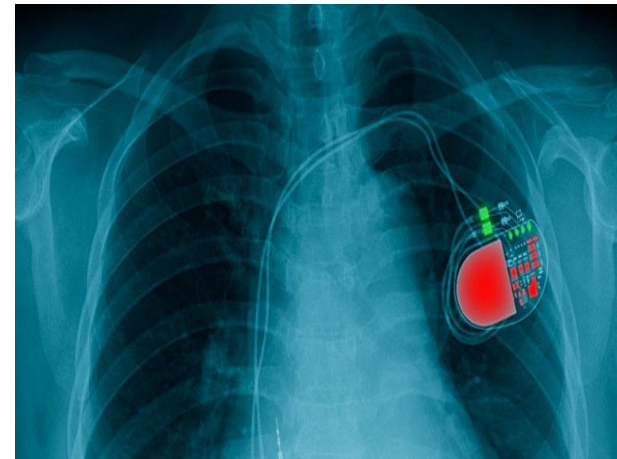
Spatial-temporal Sensitivity



Sharing Is Rooted In TRUST



Slow Moving IoT



Faster Moving IoT



Global City Teams Challenge 2018

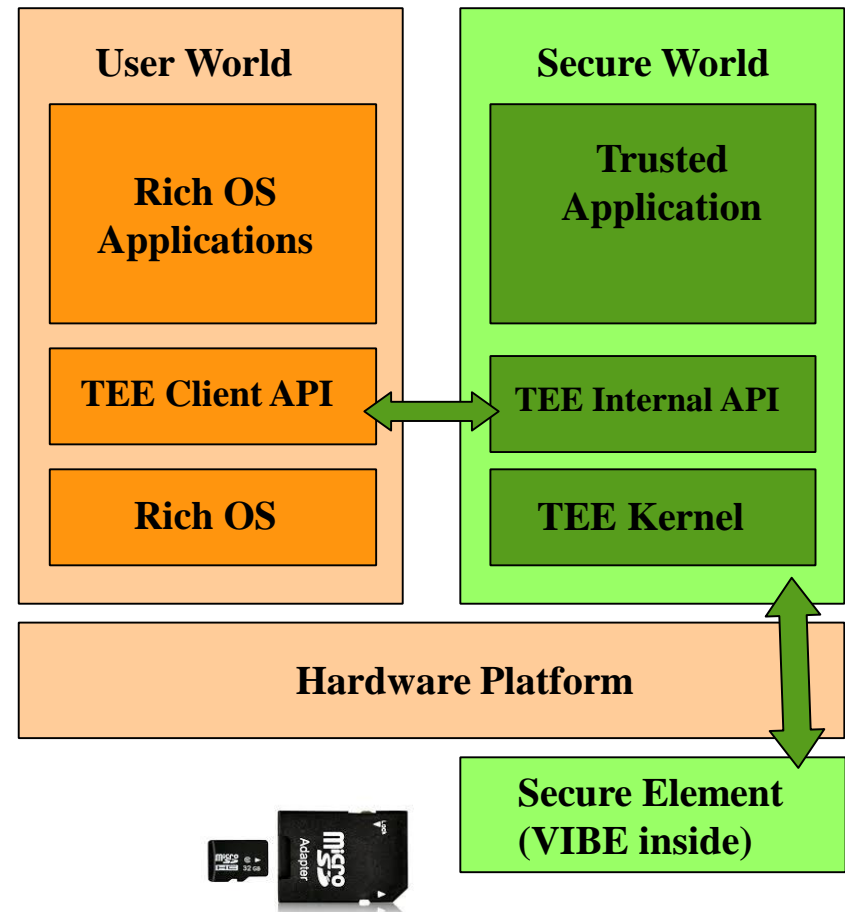
- Project GRACE is an Action Cluster, representing Singapore. Participating in the Wireless Supercluster where the members have sustained interests in municipal Wifi projects.
- GRACE-enabled smart metering over public (Wifi) networks to mitigate security challenges of the smart grid.
- Counter-measure against time spoofing. Future work – counter-measure against location spoofing.
- Secure and portable. VIBE inside Secure Element (SE). MicroSD form factor.

The GRACE Advantage

- Asymmetric encryption with certificate-less key management.
 - Simple – no certificate and revocation lists.
 - Scalable – $O(N)$ complexity vs $O(N^2)$ for PKI. N is the number of devices.
 - Secure – protect the keys, the device, the system.
- Authentication at the application layer.
 - Completely P2P, resistant to Man-in-The-Middle attacks.
 - GRACE-enabled TLS 1.2.

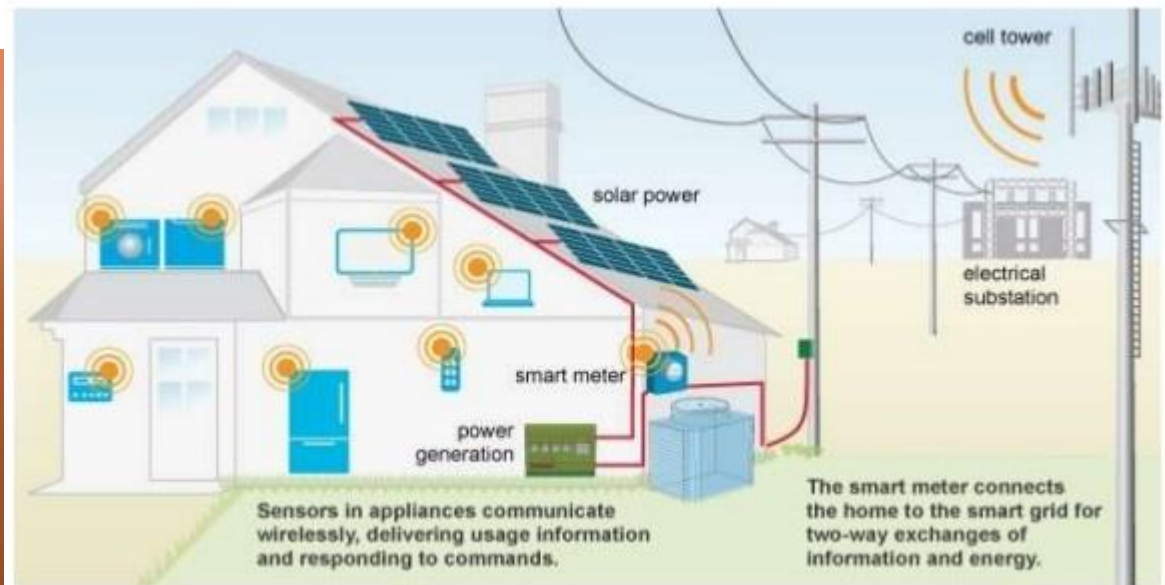
GRACE Secures the Vulnerable Systems

- The Secure World consists of the Secure Element (SE), the Trusted Execution Environment (TEE), and the Trusted Applications.
- GRACE secures the keys and the device.
- Keys are stored in the SE.
- Crypto functions are computed in the SE.



We DO The Impossible...

According to Pike Research (now Navigant Research), *end-to-end protection of private and commercial usage data is impossible...until NOW.*



Source: www.smartgrid portal.org

The secure Android app communicates with the smart meter over NFC.



THANK YOU

kangwei.woo@quantumciel.com