

[Korea]

T +82.2.2109.0293
F +82.2.2109.0294
E market@ecubelabs.com
A #506 Acetechnotower 5th Bldg., 20, Digital-ro 31-gil, Guro-gu, Seoul, Korea

[USA]

T +1.213.282.7850
E market@ecubelabs.com (Intl) /marketus@ecubelabs.com (US)
A 3470 Wilshire Blvd. Suite 535 Los Angeles, CA 90010

www.ecubelabs.com

Copyright © 2011-2018 Ecube Labs Co., Ltd. All rights reserved

CERTIFICATIONS

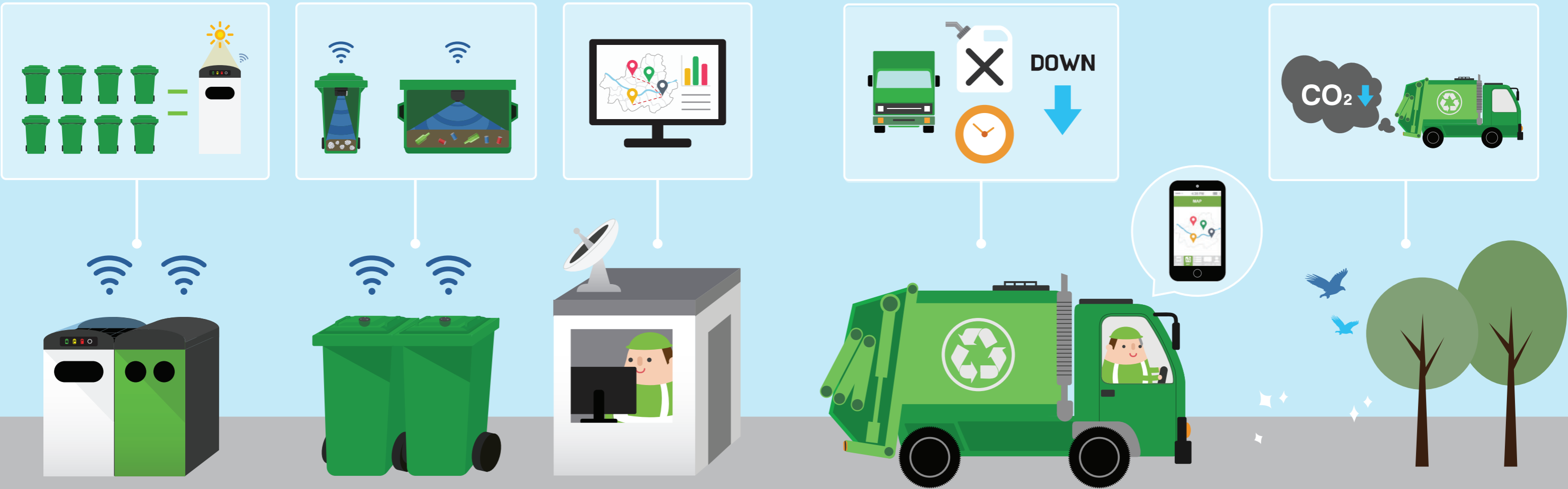


PARTNERS



Intelligent Waste Collection Solution

Dramatically reduces waste collection costs by up to 80%



1 CleanCUBE

Solar-powered waste compacting bin. Senses bin fill-level and sends real-time data to CleanCityNetworks.

2 CleanFLEX

Wireless bin fill-level sensor. Senses bin fill-level and sends real-time data to CleanCityNetworks.

3 CleanCityNetworks

Real-time monitoring and data management platform. Provides optimization of collection routes.

4 Smart Collection Planning

Collections require less trucks, fuel, and time, reducing operational costs by up to 80%.

5 Greener Environment

Eliminate overflowing bins and reduces harmful emissions, resulting in cleaner cities.

CleanCUBE

Solar-powered waste compacting bin



Product Specification

Model	Dimensions (LxWxH)	Weight	Compaction trash	Uncompacted trash
100L*	610 × 610 × 1167mm (24 × 24 × 45.9in)	140kg (330.7lbs)	100L (28gal)	500L (132gal)
120L	624 × 762 × 1440mm (24.6 × 30 × 56.7in)	155kg (374.8lbs)	120L (32gal)	600L (159gal)
240L	740 × 840 × 1536mm (29.1 × 33 × 60.5in)	190kg (427.7lbs)	240L (64gal)	1200L (317gal)

*120L / 32gal customized inner bin available

1. 100% powered by solar energy

- Solar panel up to 55W

2. Up to 8 times more waste than traditional bins

- Compaction force up to 700 kgf (0.77tf)

3. Hand detection safety sensor & Fire detection sensor

4. Wheelie bin compatible

5. Backlit or video ad panel

6. Wifi hotspot

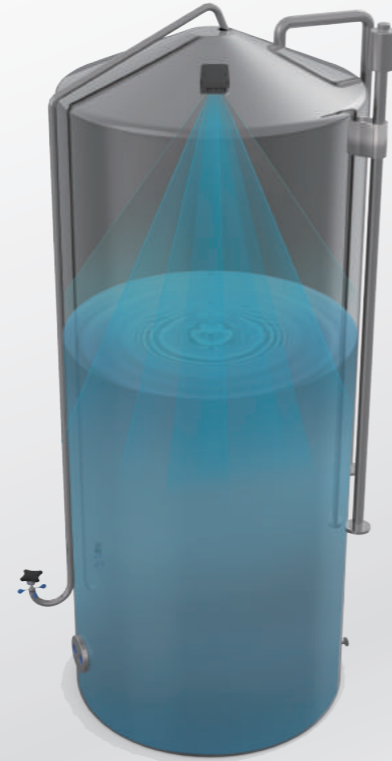
7. Wireless data transmission

8. GPS location tracking



CleanFLEX

Wireless ultrasonic fill-level sensor



1. *Attachable to any type of bin or container*
2. *Accurate sensing of both solid materials and liquids*
 - Measuring technology : Ultrasonic sensor
 - Measuring range : 2~400cm (0.7~157 in)
3. *Wireless data transmission*
4. *GPS location tracking*
5. *External antenna available*
6. *Able to install on either the sides or the top of a container*

The CleanFLEX is designed to point at different angles, which allows for easier installation!



Basic Specifications

· Power	3.67V high performance lithium battery
· Size	80mm × 85mm × 52mm (3.15 in. × 3.35 in. × 2.05 in.)
· Net weight	300g (0.66 lbs.)
· Battery life	Up to 5 yrs (Replaceable)

100°

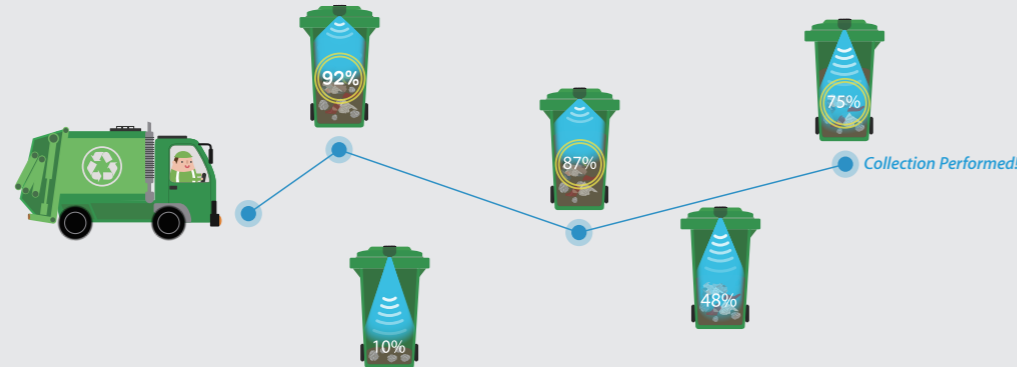


CleanCityNetworks

Real-time monitoring and data analytics platform



Collection Required!



1. Real-time monitoring of fill-level and bin status

- Sends notifications when bins are full and require collection

2. Generates schedules using predictive algorithms

- Users know when bins will become full ahead of time

3. Route optimization for each collection

- Calculates the shortest routes for each unique collection

4. Data analytics reports

- Provides insight on waste generation, collection performance, and more

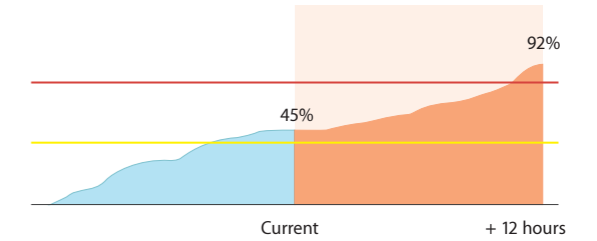
5. Customized cost reduction planning

- Recommends optimal bin allocation and collection schedules

Map-based Insight



Fill-level Forecasting



Cost Reduction Analysis

